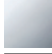


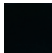




36 060 845

- cover plate 78 x 78 mm



|   |                       |               |
|---|-----------------------|---------------|
|  | Chrome                | 36 060 845-00 |
|  | Brushed Platinum      | 36 060 845-06 |
|  | Dark Chrome           | 36 060 845-19 |
|  | Matte Black           | 36 060 845-33 |
|  | Brushed Chrome        | 36 060 845-93 |
|  | Brushed Dark Platinum | 36 060 845-99 |

**Required miscellaneous**



**Concealed wall-mounted single-lever mixer -** 35 860 970 90

- max. recess depth 95 mm
- min. recess depth 80 mm



## LISSÉ Concealed single-lever mixer with cover plate - Chrome

---

LISSÉ

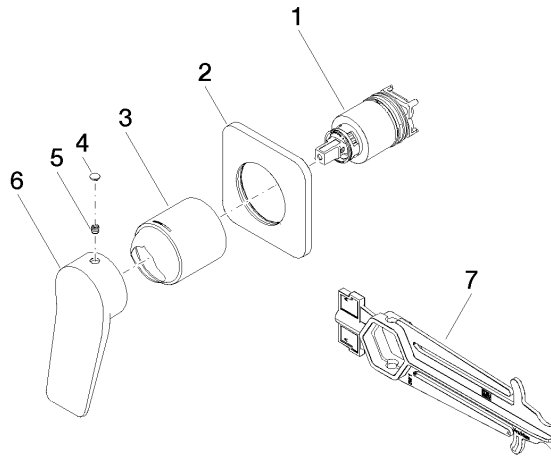
36 060 845

### Certificates

---

LGA\_29905.

36 060 845



**Spare parts list**

| No. | Item Number        | Name      | Quantity used | Delivery time |
|-----|--------------------|-----------|---------------|---------------|
| 1   | 90 15 05 046 02 90 | cartridge | 1             | 2             |
| 2   | 90 27 84 020 00-00 | rosette   | 1             | 10            |
| 3   | 09 11 02 288-00    | cover     | 1             | 10            |
| 4   | 90 31 20 087 00-00 | plug      | 1             | 10            |
| 5   | 90 31 11 030 00 90 | pin       | 1             | 2             |
| 6   | 09 20 84 021-00    | handle    | 1             | 10            |
| 7   | 90 30 09 064 00 90 | key       | 1             | 2             |